

SINAF 3.0

ACTIVE HARMONIC FILTER

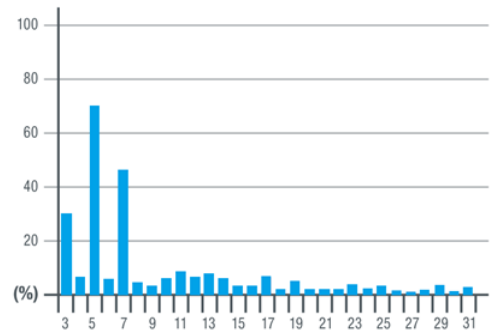
Description

Active filters offer the best possible solution to solve quality-related problems in three-phase industrial, commercial or service installations and utilities caused not only by harmonics but also by the consumption of reactive power (usually of the capacitive type).

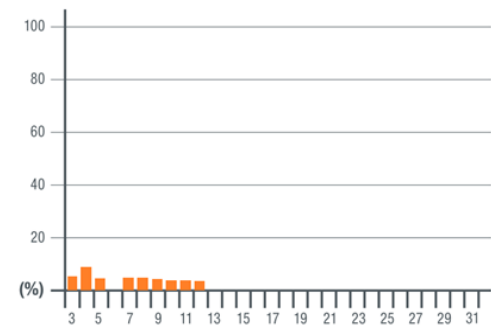
Active filters are equipped with an intuitive touch-screen display, allowing all the necessary programming actions to develop the following actions:

- Reduction of harmonics currents up to the 50th harmonic. Optional selection of the harmonic frequencies to be filtered in order to achieve the highest efficiency. The user can select the harmonic frequencies to be filtered.
- Power factor correction. Both inductive and capacitive powers.
- Current balance correction, improving the phase-to-phase consumption and reduction of neutral currents.

The correction rating of SINAF 3.0 is expressed as RMS current value. The available current can be used for any of the three actions described above.



Harmonics without SINAF 3.0



Harmonics with SINAF 3.0



Reference	Model	Current phase (A)	Dimensions A x L x P (mm)
SINAF3348030	3 Hilos	30	600x435x257
SINAF3440030	4 Hilos	30	600x435x257
SINAF3348030F (*)	3 Hilos	30	710x435x257
SINAF3440030F (*)	4 Hilos	30	710x435x257
SINAF3348100	3 Hilos	100	1835x600x822
SINAF3440100	4 Hilos	100	1835x600x822
SINAF3348200	3 Hilos	200	1835x600x822
SINAF3440200	4 Hilos	200	1835x600x822

(*) con módulo de filtro EMI incorporado

SINAF 3.0

ACTIVE HARMONIC FILTER

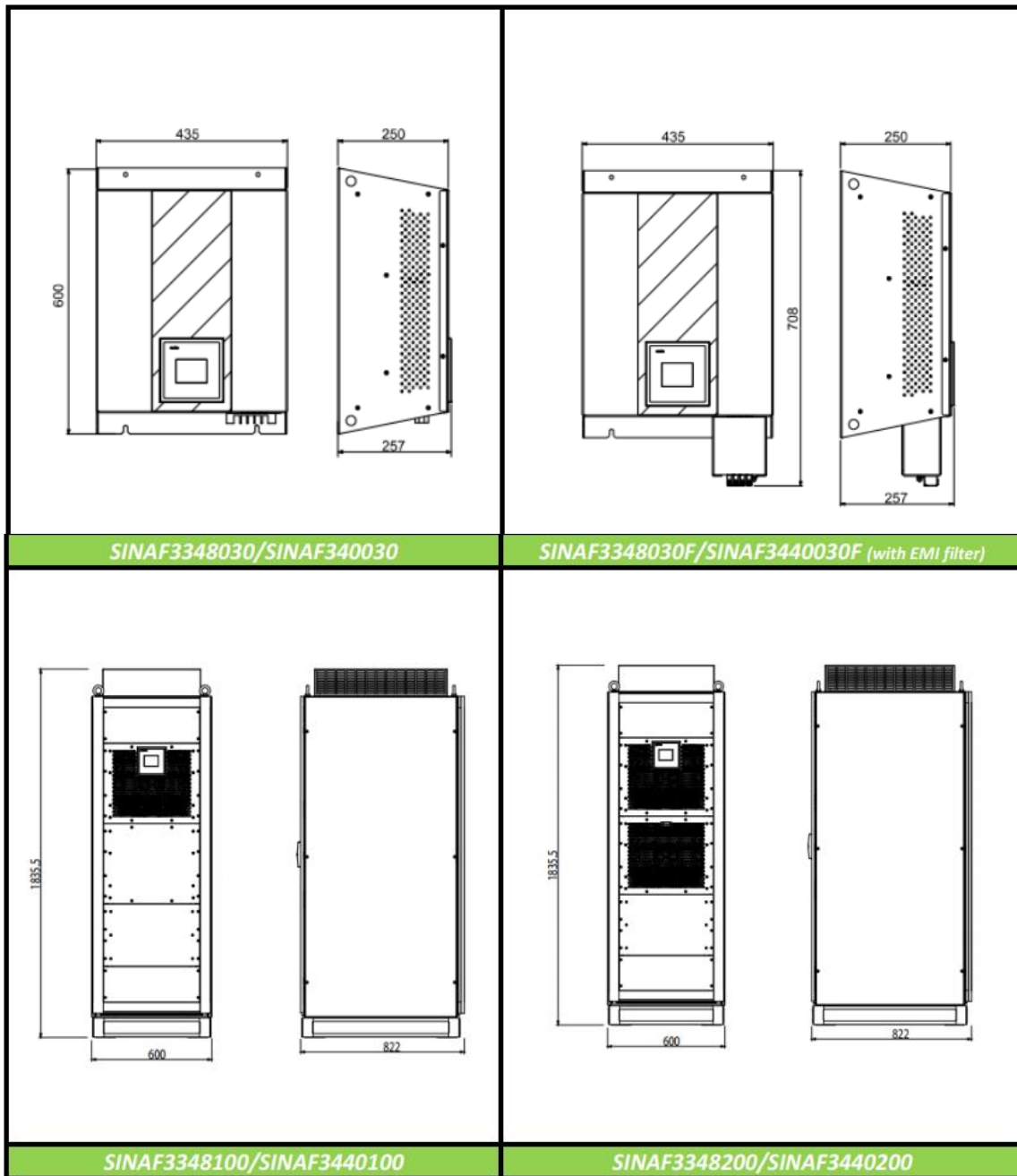
Technical features

	SINAF3348030 / ...F SINAF3440030 / ...F	SINAF3348100 SINAF3440100	SINAF3348200 SINAF3440200
MODELS			
Harmonic phase current	30 A (RMS)	100 A (RMS)	200 A (RMS)
Harmonic neutral current	90 A (RMS)	300 A (RMS)	600 A (RMS)
Harmonic peak current	60 A (PICO)	200 A (PICO)	400 A (PICO)
Max. consumption	1050 W	4000 W	8000 W
Weight	30 kg	135 kg	225 kg
ELECTRICAL FEATURES			
Rated voltage (Ph-Ph)	400...480± 10 % (3 Wires) / 230...400 V± 10 % (4 Wires)		
Frequency	50 Hz / 60 Hz ± 5%		
Noise Level	< 65 dBA		
Number of phases	3 phases without neutral wire (3 Wires) / 3 phases with neutral wire (4 Wires)		
Current harmonics compensation	2nd to 50th harmonic selectable		
Specified harmonic selection	3er to 25th harmonic		
Current measurement	.../5A, Class 1 or (0.5... 0.2, 0.2S) freq. up to 2500Hz (1.5 VA)		
FILTER CHARACTERISTICS			
Controller	Digital, DSP		
Transient response time	< 0.1 ms		
Protection degree	IP20		
Current limitation	Protection from over current by current limitation at filter rated value		
Graphic display panel	Color TCT Touch screen 3,5". Web server and Data logger (2Gb).		
STANDARDS			
Reference Harmonic Standard	EN61000-3-4,		
Safety Standard	EN 62477-1:2012		
Electromagnetic Compatibility	EN61000-6-4:2007, EN61000-6-2:2006		
COMUNICACION			
Interfase	RS-485		
Protocol	MODBUS RTU		
Baud rate	9600		
Type of parity	None, odd, even		
Ethernet	TCP/IP, Modbus TCP		
ENVIROMENTAL CONDITIONS			
Operating temperature	-10°C...+ 45 °C		
Storage temperature	-20 °C...+ 95 °C		
Relative humidity	0%...90% without condensation		
Operating Altitude	< 2000 m		

SINAF 3.0

ACTIVE HARMONIC FILTER

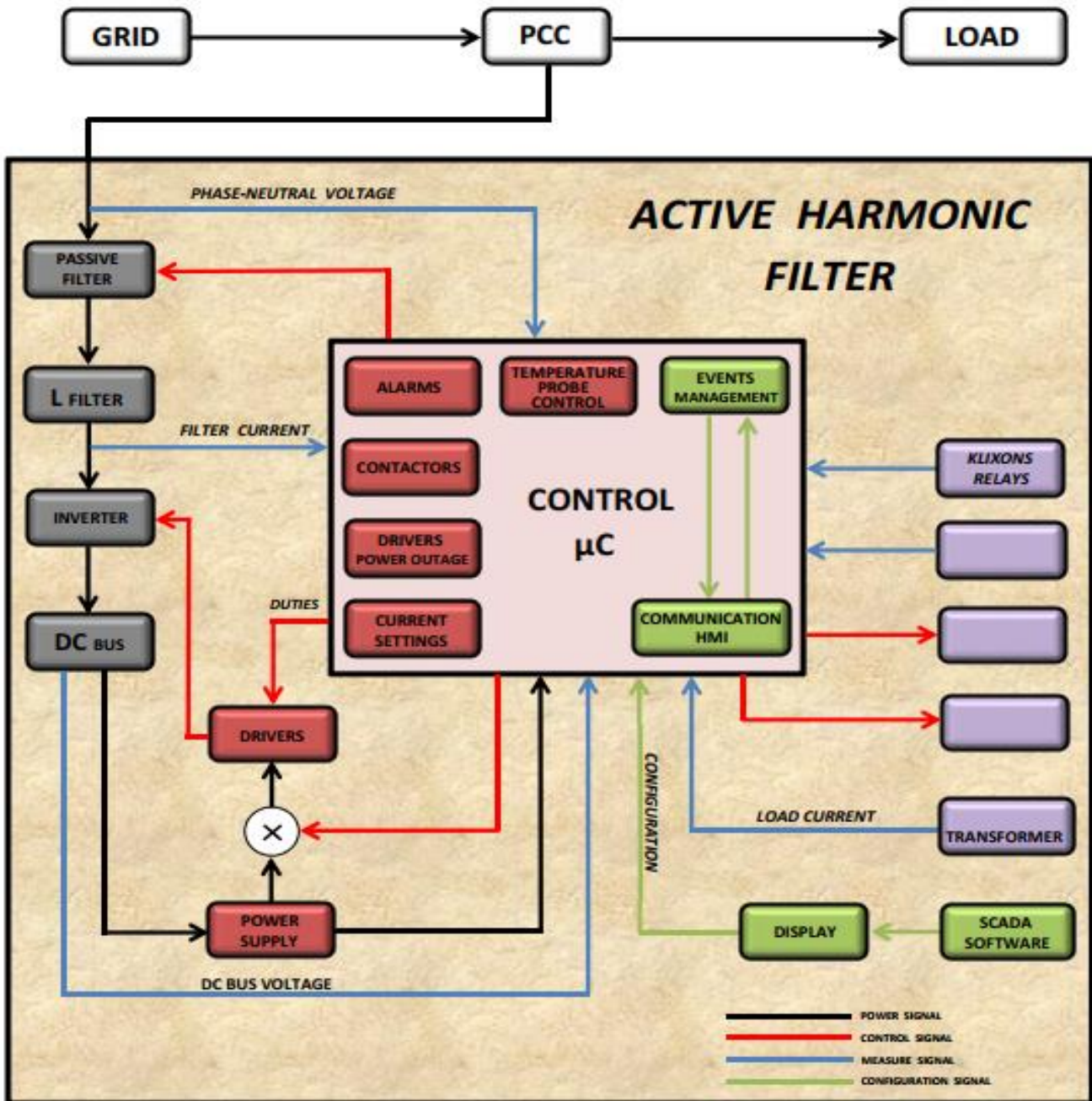
Dimensions



SINAF 3.0

ACTIVE HARMONIC FILTER

Internal operation mode



INTERNATIONAL CAPACITORS, S.A.
 C/ Vallès, 32 – Polígono Industrial Can Bernades
 08130 Santa Perpètua de Mogoda (Barcelona) SPAIN
 Tel: (+34) 93 5747 017 – Fax: (+34) 935 448 433
 E-mail: Info@lifasa.com – Web: www.lifasa.com

